

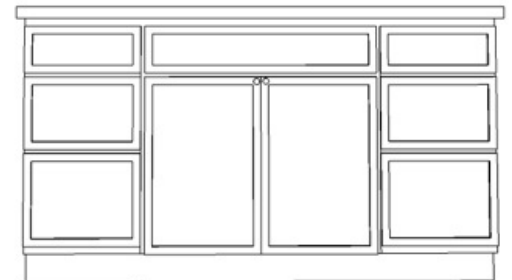
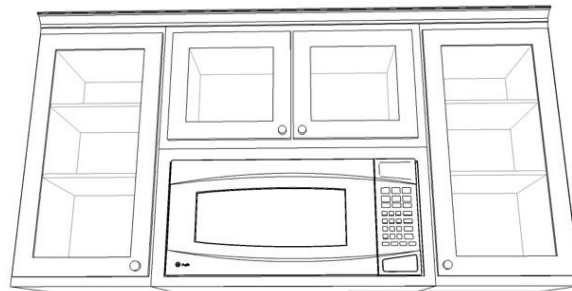
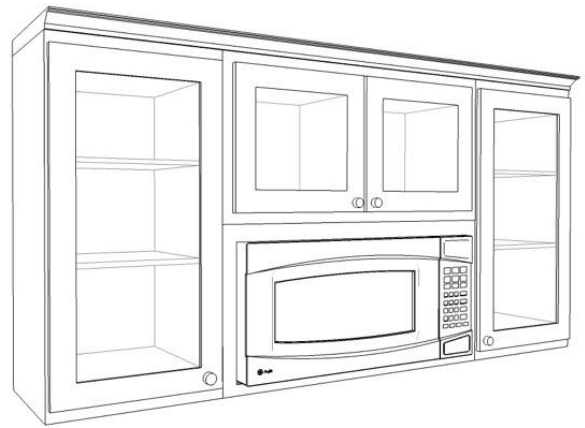


KITCHEN HUTCH WITH MICROWAVE

It has become common place in kitchens today to put the microwave above the stove in a microwave/range hood combo. What I liked about this design, is that it is simple, and yet creates a customized space for coffee, entertaining, or whatever purpose you can find. The great thing about this design is that it could be used in the kitchen, in an entertainment room, or even as a wet bar. There is a lot of flexibility in how to lay this one out, but I will explain how to build it based on the pictures.

Supplies You Will Need from the RTA Cabinet Store

- ✓ Two 30" High x 15" Wide Wall Cabinets
- ✓ One 15" High x 30" Wide Wall Cabinet (This one will depend on what type of microwave you use and the size. You could easily use a range hood combo here, or just a stand alone microwave. I based this design on a 15" high stand alone microwave.)
- ✓ Two 15" Drawer Bases
- ✓ One 30" Base Cabinet (or Sink Base if you are making a wet bar)
- ✓ One Piece of light rail
- ✓ One Piece of toe kick
- ✓ Two 1530 Mullion Doors (optional)
- ✓ One Piece of crown molding
- ✓ One Dishwasher End Panel
- ✓ Four L-brackets and screws from home supply store



Instructions to Build Kitchen Hutch with Microwave

The installation process for this design is fairly straight forward. Install the wall cabinets first, then the base cabinets. The variable is how the microwave is installed. Here are two different ways to handle the Microwave:

Option 1: If you are using a mounted microwave or a microwave/range hood combo, it will get mounted to the underside of the middle wall cabinet. Since it will be mounted there, you will not need the dishwasher end panel or the L-brackets

Option 2: If you are using a counter microwave, you will need to create a shelf. For this, cut down the dishwasher end panel to fit between the two side cabinets. Use the L-brackets to secure the shelf to the bottom edge of the adjacent wall cabinets.

Once the microwave is installed, use the light rail molding to create a seamless look across the front. Then install the crown molding and swap out the doors for the mullion doors. Note: If you would like to add the mullion doors to the upper doors as displayed in the photo, you will have to use a router to remove the center panels on the doors. This can be accomplished by routing out the edge on the back of the door that is holding the center panel in.

My Design Notes