

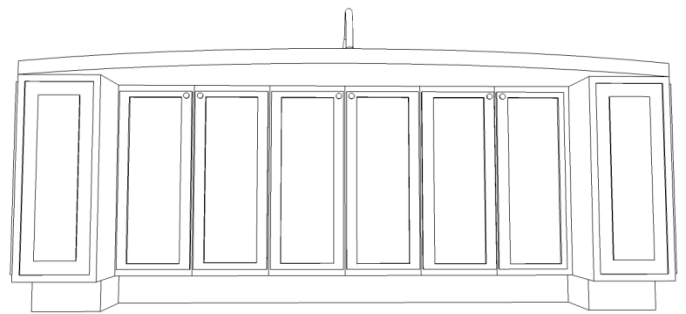
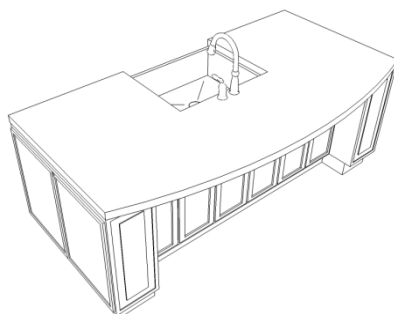
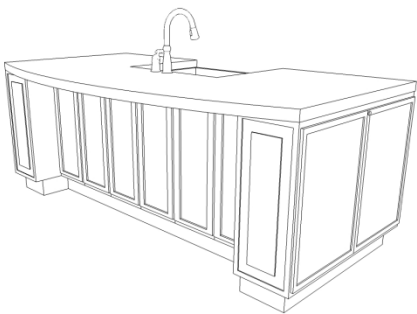
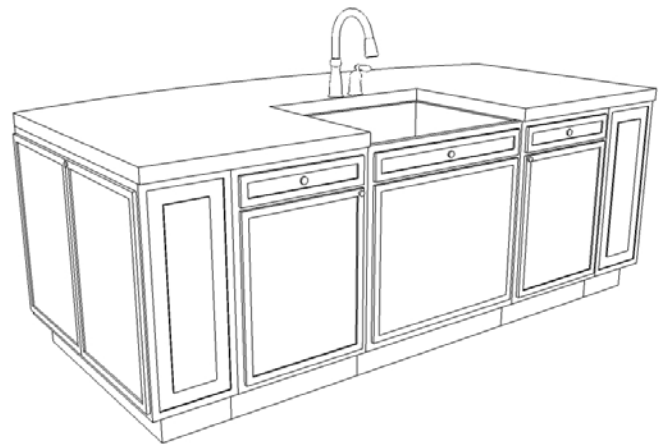
LARGE ISLAND WITH CURVED TOP

I really like this island design for a large kitchen (at almost 4 feet wide and over 8 ft long, it will require a lot of space). This design offers storage on all four sides, while providing a large amount of work surface AND seating; making the island multi-functional. In the picture they feature a built-in farmer's sink, but for the instructions we are just going to show a regular undermount sink. The advantage to building a big island like this one, is that it creates a great gathering space and allows the chef to interact with guests.



Supplies You Will Need from the RTA Cabinet Store

- ✓ Two 42" wide x 30" high wall cabinets
- ✓ Two 24" wide x 30" high wall cabinets
- ✓ One 30" wide x 30" high wall cabinet
- ✓ Two 24" wide base cabinets
- ✓ One 30" wide sink base cabinet
- ✓ Four 30" decorative wall end panels
- ✓ Six 8' pieces of toe kick
- ✓ Two 3x4 Island Panels
- ✓ Four 8' long 2x4's from local home supply store

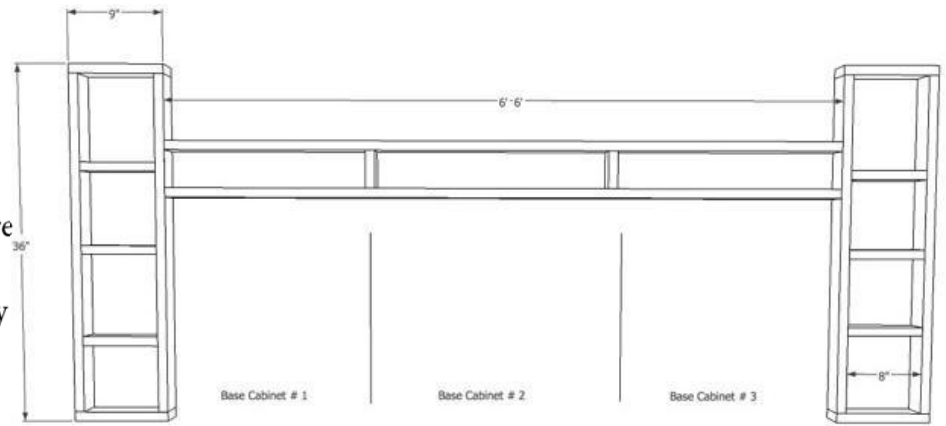


RTA
CABINET STORE

www.rtacabinetstore.com
P. 610-337-5934 F. 484-231-8726

Instructions to Build Large Island with Curved Top

Step 1: Layout your floor plan. It is a good idea to mark everything on the floor before starting this project, since there will be a lot of framing involved. Mark out where the base cabinets are going to go, and then use the framing dimensions to the right to make sure everything will fit. This is also important if you are running any water lines or electricity to the island.



Step 2: Install the base cabinets

Step 3: Using the 2x4's, create a frame for the wall cabinets (see diagram of framing). There are a couple of ways you can build the frame, depending upon what look you are trying to create. In the design picture, they brought the toe kick to the end edge of the wall cabinets to create a flush look (same on the sides of the end cabinets). In our drawing, I add the illusion of the wall cabinets being base cabinets, with the toe kick being set back. If you want a flush look on the face frames, just simply extend the 2x4 framing 3" on every side. For proper height, the 2x4's should be laid flat, with three layers of 2x4's being used.

Step 4: Install the 30" wide and 24" wide Wall cabinets to the back of the base cabinets, setting them on the frame. They should be screwed directly to the back of the base cabinets, and then anchored to the framing as well.

Step 5: Before installing the end wall cabinets, take the island panels, and cut them to size to cover up the back. Attach to the back of the 42" wall cabinets

Step 6: Install the 42" wall cabinets on the end of the island. This will be done the same way step 4 was done. Anchor the wall cabinets through the back of the cabinet, and then to the framing as well.

Step 7: Install the decorative end panels on the sides of the 42" wall cabinets, to give it a finished look

Step 8: Install the toe kick over the framing to finish off the bottom. Use a miter saw to miter the ends of the toe kick at each corner.

My Design Notes